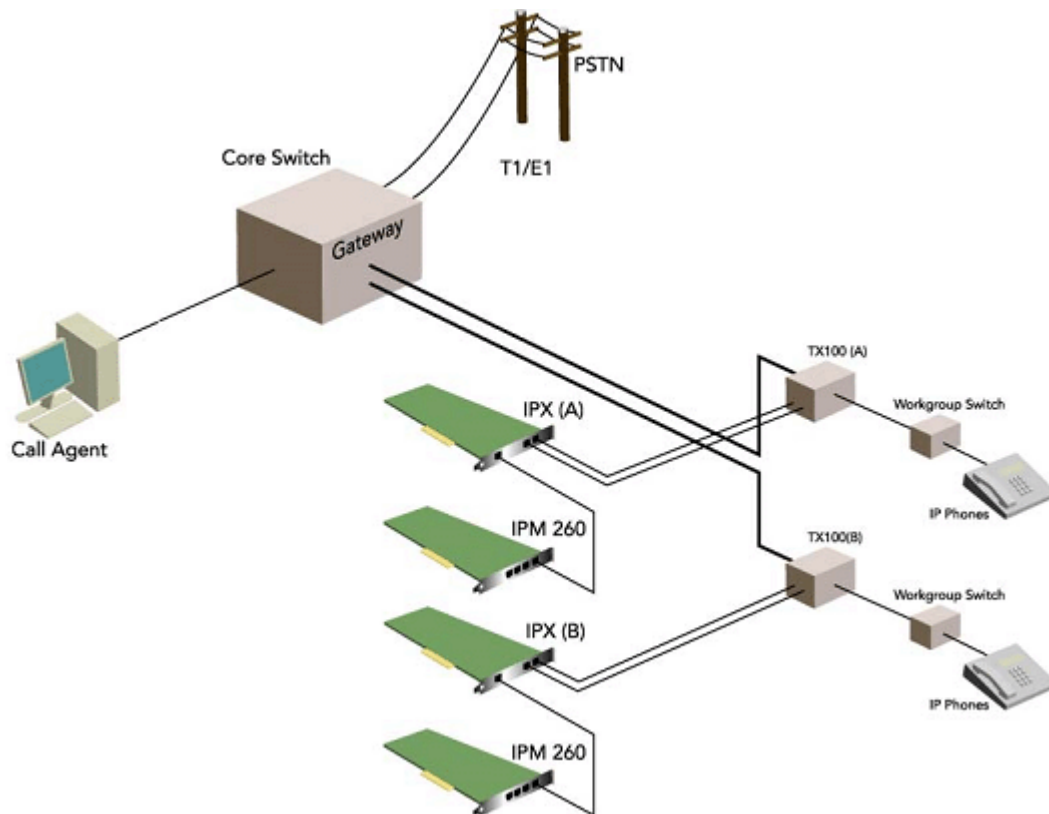


blueButler iDR VoIP Call Recording

blueButler iDR uses an IPX packet filter interface to monitor VoIP packets on the LAN. By placing IP taps at appropriate places in their network, customers can record incoming, outgoing and internal calls as required. Once the calls are recorded, they are stored in the SQL database where users can use the powerful search capabilities available in blueButler.

The IPX provides packet filtering and media forwarding for IP-PBXs. Supporting multiple protocols, it has 2 on-board connections for monitoring up to 120 stations of upstream and downstream RTP and one on-board connection for media output. The IPX provides complete event triggering, and call state reporting for many of the industry leading IP-PBXs.



- **Tap Environment** – The IPX is designed for IP call recording applications. Its active interfaces can be connected directly to an available mirror port or, when used in conjunction with a TX100, can be connected passively anywhere within the IP-PBX configuration.
- **Session Management** – The IPX software includes a Session Manager for tracking media sessions on the IP network. Each media session is treated as a unique call with a unique Session ID.
- **Station Management** – The IPX software automatically locates all VoIP endpoints on the network and assigns each a unique Station ID. IPX software dynamically identifies phones as they are added or removed from the network.